

<b>Price List Dates:</b>	
Pricing	10.02.23
Revisions	09.22.23



Interwoven Quickship for Care products are available to ship within 5 or 10 business days upon receipt of a credit-approved order.

This program has a limited weekly volume capacity, with orders being entered on a first-come, first-served basis.

Consult your Customer Service Team for any seating order with more than 20 of a specific model.

▶ See page

<b>Seating</b>	
Greer	QS.2
Physician/Exam	QS.3
Rolli	QS.4
Spruce	QS.5
Sycamore Metal	QS.8
Tucker Health	QS.10
<b>Height-Adjust Tables</b>	QS.12
Aidin	QS.12
<b>Surface Materials</b>	QS.14
Finishes	QS.14
Upholstery	QS.16

# INTERWOVEN® QUICKSHIP FOR CARE

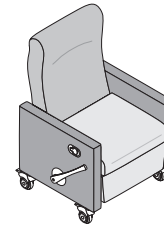
Greer™ | Patient Recliners | Individual Casters | Polyurethane Arm Caps | Configurable

Ships in 10 Days

Table of Contents [▶ See page QS.1](#)  
Surface Materials [QS.14](#)



With Arm Caps



Contrasting Upholstery Key:

- = Back
- = Base/seat
- = Arms

Model	Description	Quickship Kimball International Seating Textile Price Grade										Shipping		GSA
		1	2	3	4	5	6	7	L7	L8	lbs.	Cubic Feet	SIN	
<b>QK49RILCACP</b>	With polyurethane arm caps	\$3999	4314	4482	4689	—	5276	—	—	—	160.0	37.5	339113H	

Description	Dimensions (Inches)							
	Overall			Seat		Arm		Extended
	H	W*	D	H	W	D	H	L
Without arm caps	46	32	28	22	23¾	19½	26¼	68

\*Includes 1½" for footrest lever on right as seated.

## Features

- Grey, non-marking, single-wheel casters (locking front casters; non-locking back casters)
- Independent leg rest and back operation
- Infinite back lock
- Built-in headrest
- Easy-to-use back recline and footrest release handles
- Polyurethane arm caps: 462 Cinder

## Options

▶ See below.

## How to Specify

- ① Model
- ② Back textile grade
- ③ Back textile number
- ④ Base/seat textile grade
- ⑤ Base/seat textile number
- ⑥ Arms textile grade
- ⑦ Arms textile number
- ⑧ Arm cap designator:  
**462** = Cinder
- ⑨ Moisture barrier:  
**X** = None  
**MB1** = Seat (+\$159)  
**MB2** = Back and seat (+\$278)
- ⑩ Push bar:  
**Y** = Yes (+\$188)  
**N** = No
- ⑪ Utility hook on left:  
**Y** = Yes (+\$188)  
**N** = No
- ⑫ Bump guard:  
**Y** = Yes (+\$48)  
**N** = No

# INTERWOVEN® QUICKSHIP FOR CARE

Physician/Exam | Stools | Without Footring

Ships in 5 Days

Table of Contents [▶ See page QS.1](#)  
 Surface Materials [QS.14](#)



## Features

- Upholstered, cushioned seat
- Five-star plastic base: black
- Height-adjust lever
- Hard, dual-wheel casters: black

## Options

- Soft casters

## How to Specify

- 1 Model
- 2 Seat textile grade
- 3 Seat textile number
- 4 Casters:
  - C3** = Hard casters for carpeted floors
  - C4** = Soft casters for hard floors (+\$43)

Model	Description	Quickship Kimball International Seating Textile Price Grade										Shipping		GSA
		1	2	3	4	5	6	7	L7	L8	lbs.	Cubic Feet	SIN	
QK72PES	Without footring	\$485	516	533	553	—	612	—	—	—	16.6	7.3	339113H	

Description	Dimensions (Inches)					
	Overall			Seat	Cushion	
	H	W	D	Diameter	Thickness	
Without footring	16 <sup>3</sup> / <sub>4</sub> –21 <sup>3</sup> / <sub>4</sub>	23 <sup>1</sup> / <sub>2</sub>	32 <sup>1</sup> / <sub>4</sub>	15	2 <sup>3</sup> / <sub>4</sub>	

# INTERWOVEN® QUICKSHIP FOR CARE

Rolli™ | Stools

Ships in 5 Days

Table of Contents [▶ See page QS.1](#)  
 Surface Materials [QS.14](#)



## Features

- Black non-woven upholstery on cushioned seat and back
- Polypropylene black back frame and seat pan
- 4° forward seat tilt
- 360° swivel
- 9.8° back tilt
- 1<sup>3</sup>/<sub>4</sub>" back height adjustment
- 5-star base with integrated footrest; black reinforced plastic
- Black, hard dual-wheel casters for carpeted floors
- Polished aluminum footring with black powdercoated aluminum spokes
- Ships ready to assemble

Model	Description	Price	Shipping		GSA
			lbs.	Cubic Feet	SIN
QV62STBKHCNWFBK	Stool	\$945	15.50	5.40	Non-contract

Description	Dimensions (Inches)							
	Overall			Seat			Arm	
	H	W	D	H	W	D	H	W
Stool	33-43 <sup>3</sup> / <sub>4</sub>	22 <sup>1</sup> / <sub>4</sub>	22 <sup>1</sup> / <sub>4</sub>	20-28	17	14 <sup>5</sup> / <sub>8</sub>	27 <sup>7</sup> / <sub>8</sub> -38 <sup>3</sup> / <sub>4</sub>	1 <sup>5</sup> / <sub>8</sub>

## How to Specify

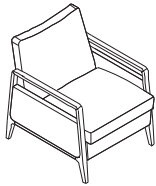
- ① Model

# INTERWOVEN® QUICKSHIP FOR CARE

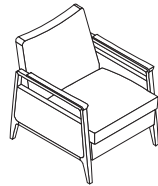
Spruce™ | Lounge Chairs | Open Arm

Ships in 10 Days

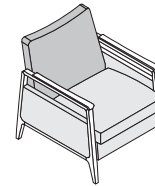
Table of Contents [▶ See page QS.1](#)  
Surface Materials [QS.14](#)



Without arm caps



With arm caps



Contrasting Upholstery Key:  
■ = Back (inside and outside)  
■ = Seat (seat, front panel, inside and outside arms)

Model	Description	Quickship Kimball International Seating Textile Price Grade										Shipping		GSA
		1	2	3	4	5	6	7	L7	L8	lbs.	Cubic Feet	SIN	
<b>QK67L1</b>	Without arm caps	\$2587	2795	2907	3043	—	3432	—	—	—	70.0	22.9	339113H	
<b>QK67L1ACP</b>	With polyurethane arm caps	\$2754	2962	3074	3210	—	3599	—	—	—	70.0	22.9	339113H	

Description	Dimensions (Inches)						
	Overall			Seat		Arm	
	H	W	D	H	W	D	H
Without arm caps	30½	25½	28½	18	22	19½	22¾
With arm caps	30½	25½	28½	18	22	19½	23½

## Features

- Kiln-dried European beech frame
- Wall-saver legs
- Spring seating
- Clean-out
- Adjustable glides
- Polyurethane arm caps, if applicable: 462 Cinder

## Options

- Moisture-barrier on the seat or inside back and seat

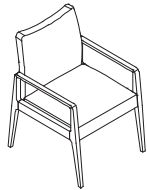
## How to Specify

- ① Model
- ② Back textile grade
- ③ Back textile number
- ④ Seat textile grade
- ⑤ Seat textile number
- ⑥ Wood finish designator
- ⑦ Arm cap designator, if applicable  
**462** = Cinder
- ⑧ Moisture barrier:  
**X** = None  
**MB1** = Seat (+\$159)  
**MB2** = Inside back and seat (+\$278)

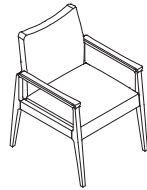
# INTERWOVEN® QUICKSHIP FOR CARE

Spruce™ | Guest Chairs | Open Arm

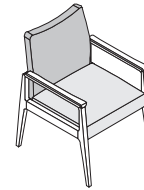
Ships in 10 Days



Without arm caps



With arm caps



Contrasting Upholstery Key:  
 ■ = Back (inside and outside)  
 ■ = Seat (seat, front panel, inside and outside arms)

Table of Contents ▶ See page QS.1  
 Surface Materials QS.14

## Features

- Kiln-dried European beech frame
- Wall-saver legs
- Clean-out
- Unitized interior metal frame
- Adjustable glides
- Polyurethane arm caps, if applicable: 462 Cinder

## Options

- Moisture-barrier on the seat or inside back and seat

## How to Specify

- Model
- Back textile grade
- Back textile number
- Seat textile grade
- Seat textile number
- Wood finish designator
- Arm cap designator, if applicable  
**462** = Cinder
- Moisture barrier:  
**X** = None  
**MB1** = Seat (+\$159)  
**MB2** = Inside back and seat (+\$278)

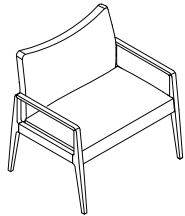
Model	Description	Quickship Kimball International Seating Textile Price Grade										Shipping		GSA
		1	2	3	4	5	6	7	L7	L8	lbs.	Cubic Feet	SIN	
<b>QK67G1</b>	Without arm caps	\$2027	2183	2267	2369	—	2660	—	—	—	47.0	22.9	339113H	
<b>QK67G1ACP</b>	With polyurethane arm caps	\$2177	2333	2417	2519	—	2810	—	—	—	47.0	22.9	339113H	

Description	Dimensions (Inches)						
	Overall			Seat		Arm	
	H	W	D	H	W	D	H
Without arm caps	34½	23¾	26¼	18	21	19½	24½
With arm caps	34½	23¾	26¼	18	21	19½	25¼

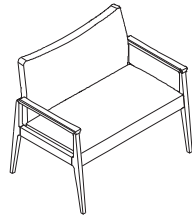
# INTERWOVEN® QUICKSHIP FOR CARE

Spruce™ | Bariatric Chairs | Open Arm

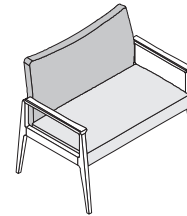
Ships in 10 Days



Without arm caps



With arm caps



Contrasting Upholstery Key:

■ = Back (inside and outside)

■ = Seat (seat, front panel, inside and outside arms)

Model	Description	Quickship Kimball International Seating Textile Price Grade										Shipping		GSA
		1	2	3	4	5	6	7	L7	L8	lbs.	Cubic Feet	SIN	
<b>QK67B1</b>	Without arm caps	\$2950	3119	3210	3321	—	3636	—	—	—	70.0	42.0	339113H	
<b>QK67B1ACP</b>	With polyurethane arm caps	\$3055	3224	3315	3426	—	3741	—	—	—	70.0	42.0	339113H	

Description	Dimensions (Inches)						
	Overall			Seat		Arm	
	H	W	D	H	W	D	H
Without arm caps	34½	37	26¼	18	34	19½	24½
With arm caps	34½	37	26¼	18	34	19½	25¼

Table of Contents [▶ See page QS.1](#)  
Surface Materials [QS.14](#)

## Features

- Kiln-dried European beech frame
- Wall-saver legs
- Clean-out
- Unitized interior metal frame
- Adjustable glides
- Polyurethane arm caps, if applicable: 462 Cinder

## Options

- Moisture-barrier on the seat or inside back and seat

## How to Specify

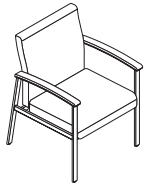
- ① Model
- ② Back textile grade
- ③ Back textile number
- ④ Seat textile grade
- ⑤ Seat textile number
- ⑥ Wood finish designator
- ⑦ Arm cap designator, if applicable  
**462** = Cinder
- ⑧ Moisture barrier:  
**X** = None  
**MB1** = Seat (+\$159)  
**MB2** = Inside back and seat (+\$278)

# INTERWOVEN® QUICKSHIP FOR CARE

Sycamore™ Metal | Guest Chairs

Ships in 10 Days

Table of Contents [▶ See page QS.1](#)  
 Surface Materials [QS.14](#)



## Features

- Powdercoated steel frame:  
501 Platinum Metallic
- Wall-saver legs
- Clean-out
- Adjustable glides
- Polyurethane arm caps:  
462 Cinder

## Options

- Moisture-barrier on seat

## How to Specify

- ① Model
- ② Back textile grade
- ③ Back textile number
- ④ Seat textile grade
- ⑤ Seat textile number
- ⑥ Frame finish:  
**501** = Platinum Metallic
- ⑦ Arm cap designator:  
**462** = Cinder
- ⑧ Moisture barrier:  
**X** = None  
**MB1** = Seat (+\$159)

Model	Description	Quickship Kimball International Seating Textile Price Grade										Shipping		GSA
		1	2	3	4	5	6	7	L7	L8	lbs.	Cubic Feet	SIN	
<b>QK68GMR1ACP</b>	With polyurethane arm caps	\$1565	1669	1725	1794	—	1987	—	—	—	65.0	16.3	339113H	

Description	Dimensions (Inches)						
	Overall			Seat		Arm	
	H	W	D	H	W	D	H
With arm caps	35	25½	25	19	21¾	18¼	25¾

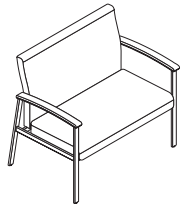


# INTERWOVEN® QUICKSHIP FOR CARE

Sycamore™ Metal | Bariatric Chairs

Ships in 10 Days

Table of Contents [▶ See page QS.1](#)  
 Surface Materials [QS.14](#)



## Features

- Powdercoated steel frame:  
platinum metallic
- Wall-saver legs
- Clean-out
- Adjustable glides
- Polyurethane arm caps:  
462 Cinder

## Options

- Moisture-barrier on seat

## How to Specify

- ① Model
- ② Back textile grade
- ③ Back textile number
- ④ Seat textile grade
- ⑤ Seat textile number
- ⑥ Frame finish:  
**501** = Platinum Metallic
- ⑦ Arm cap designator:  
**462** = Cinder
- ⑧ Moisture barrier:  
**X** = None  
**MB1** = Seat (+\$159)

Model	Description	Quickship Kimball International Seating Textile Price Grade										Shipping		GSA
		1	2	3	4	5	6	7	L7	L8	lbs.	Cubic Feet	SIN	
<b>QK68BMR1ACP</b>	With polyurethane arm caps	\$2015	2145	2215	2301	—	2543	—	—	—	75.0	25.0	339113H	

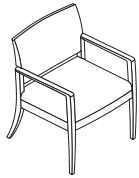
Description	Dimensions (Inches)						
	Overall			Seat		Arm	
	H	W	D	H	W	D	H
With arm caps	35	37¾	25	19	34	18¼	25¾

# INTERWOVEN® QUICKSHIP FOR CARE

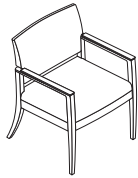
Tucker™ Health | Guest Chairs

Ships in 10 Days

Table of Contents [▶ See page QS.1](#)  
Surface Materials [QS.14](#)



No Arm Caps



With Arm Caps

Model	Description	Quickship Kimball International Seating Textile Price Grade									Shipping		GSA
		1	2	3	4	5	6	7	L7	L8	lbs.	Cubic Feet	SIN
<b>QK53CG1</b>	No arm caps	\$1821	1908	1955	2012	—	2174	—	—	—	29.49	10.60	339113H
<b>QK53CG1ACP</b>	Polyurethane arm caps	\$2088	2175	2222	2279	—	2441	—	—	—	30.10	10.60	339113H

Description	Dimensions (Inches)								
	Overall			Seat			Arm		
	H	W	D	H	W	D	H	W	
No arm caps	31¾	23¾	25	18	21	19½	25¼	1¼	
With arm caps	31¾	23¾	25	18	21	19½	25¾	1¼	

## Features

- Steam-bent, kiln-dried, European beech frame
- Wall-saver legs
- Clean-out
- Polyurethane arm caps, if applicable: 462 Cinder
- Nylon glides

## How to Specify

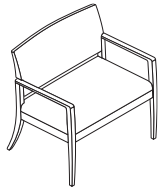
- 1 Model
- 2 Back upholstery grade
- 3 Back upholstery number
- 4 Seat upholstery grade
- 5 Seat upholstery number
- 6 Wood finish price group:  
**STD** = Group 1
- 7 Wood finish designator
- 8 Arm cap color designator, if applicable  
**462** = Cinder
- 9 Moisture barrier:  
**X** = None  
**MB1** = Seat (+\$159)  
**MB2** = Inside back and seat (+\$278)

# INTERWOVEN® QUICKSHIP FOR CARE

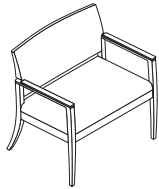
Tucker™ Health | Bariatric Chairs

Ships in 10 Days

Table of Contents [▶ See page QS.1](#)  
 Surface Materials [QS.14](#)



No Arm Caps



With Arm Caps

Model	Description	Quickship Kimball International Seating Textile Price Grade									Shipping		GSA
		1	2	3	4	5	6	7	L7	L8	lbs.	Cubic Feet	SIN
<b>QK53CB1</b>	No arm caps	\$2513	2624	2684	2757	—	2965	—	—	—	42.72	22.90	339113H
<b>QK53CB1ACP</b>	Polyurethane arm caps	\$2782	2893	2953	3026	—	3234	—	—	—	43.33	22.90	339113H

Description	Dimensions (Inches)							
	Overall			Seat		Arm		
	H	W	D	H	W	D	H	W
No arm caps	31¾	31¼	25	18	28½	19½	25¼	1¼
With arm caps	31¾	31¼	25	18	28½	19½	25¾	1¼

## Features

- Steam-bent, kiln-dried, European beech frame
- Wall-saver legs
- Clean-out
- Polyurethane arm caps, if applicable: 462 Cinder
- Nylon glides

## How to Specify

- 1 Model
- 2 Back upholstery grade
- 3 Back upholstery number
- 4 Seat upholstery grade
- 5 Seat upholstery number
- 6 Wood finish price group:  
**STD** = Group 1
- 7 Wood finish designator
- 8 Arm cap color designator, if applicable  
**462** = Cinder
- 9 Moisture barrier:  
**X** = None  
**MB1** = Seat (+\$159)  
**MB2** = Inside back and seat (+\$278)

**INTERWOVEN® QUICKSHIP FOR CARE**  
 Aidin™ | Height-Adjust Tables | Soft Rectangle | Pre-Configured

Ships in 5 Days

Table of Contents [▶ See page QS.1](#)  
 Surface Materials [QS.14](#)



**Standard Includes**

- TFL top: 405 Designer White
- 2mm vinyl rim on all sides
- Base: 501 Platinum Metallic
- Four casters suitable for both hard and soft flooring: white with grey treads (front casters are locking)

**How to Specify**

- 1 Model

<b>Model</b>	<b>Dimensions</b> (Inches)			<b>Price</b>	<b>Shipping</b>	<b>GSA</b>
	<i>Overall D</i>	<i>W</i>	<i>H</i>			
<b>41K1824RT405LL501</b>	18	24	28½–44¼	\$1504	lbs. 35.10	<i>Cubic Feet</i> 3.80 Non-Contract

**INTERWOVEN® QUICKSHIP FOR CARE**  
 Aidin™ | Height-Adjust Tables | Soft Rectangle | Configurable

Ships in 10 Days

Table of Contents [▶See page QS.1](#)  
 Surface Materials [QS.14](#)



**Standard Includes**

- TFL top with 2mm vinyl rim on all sides
- Base: 501 Platinum Metallic
- Four casters suitable for both hard and soft flooring: white with grey treads (front casters are locking)

**How to Specify**

- ① Model
- ② Rim profile:  
**P** = Softened vinyl
- ③ TFL designator
- ④ Base paint designator:  
**501** = Platinum metallic
- ⑤ Vinyl finish designator

<b>Model</b>	<b>Dimensions</b> (Inches)			<b>Price</b>	<b>Shipping</b>		<b>GSA</b>
	<i>Overall D</i>	<i>W</i>	<i>H</i>		<i>lbs.</i>	<i>Cubic Feet</i>	<i>SIN</i>
<b>Q41K1824SRLLP</b>	18	24	28½–44¼	\$1504	35.10	3.80	Non-Contract

---

### Paint

- Applies to:* 501 Platinum Metallic
- Aidin height-adjust tables
  - Sycamore Metal frame

---

### Polyurethane

- Applies to:* 462 Cinder
- Greer arm caps
  - Spruce arm caps
  - Sycamore Metal arm caps
  - Tucker Health arm caps

---

### Thermally Fused Laminate (TFL)

- Applies to:* 405 Designer White
- Aidin pre-configured height-adjust table

---

*Applies to:*

- Aidin configurable height-adjust table

#### Woodgrain

- CO Canyon
- DF Driftwood
- YO Monterey
- 792 Sable
- NW Tuscan

#### Solid Color

- 440 Cloud
- 405 Designer White
- 450 Fog
- 488 Frosty White
- 461 Graphite

▶ For a complete overview of the surface materials program, see the *Surface Materials Reference Guide* at [www.kimballinternational.com](http://www.kimballinternational.com)

**Vinyl Edge**

*Applies to:*

- Aidin configurable height-adjust table rim

**Woodgrain**

CO	Canyon
DF	Driftwood
YO	Monterey
792	Sable
NW	Tuscan

**Solid Color**

440	Cloud
405	Designer White
450	Fog
488	Frosty White
461	Graphite

*Applies to:*

- Aidin pre-configured height-adjust table

**Solid Color**

405	Designer White
-----	----------------

**Wood**

*Applies to:*

- Spruce seating
- Tucker Health seating

CO	Canyon
CC	Cordoba
DF	Driftwood
MW	Midtown
MH	Mocha
YO	Monterey
PB	Portobello
792	Sable
NW	Tuscan

▶ For a complete overview of the surface materials program, see the *Surface Materials Reference Guide* at [www.kimballinternational.com](http://www.kimballinternational.com)

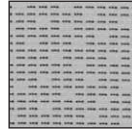
*Applies to:*

- Quickship for Care Seating

### Quickship Kimball International Seating Textiles

Select patterns from Price Grades 1, 2, 3, 4, and 6

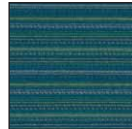
#### GRADE 1



Input\*

\* Woven textile that is bleach cleanable. Consider application before specifying.

#### GRADE 2



Phrase\*



Sedona

#### GRADE 3



Silvertex

#### GRADE 4



Masquerade

#### GRADE 6



Essence/Ultraleather™

▶ For a complete overview of the surface materials program, see the *Surface Materials Reference Guide* at [www.kimballinternational.com](http://www.kimballinternational.com)